



# SOLUTION

## **HRB** SERIES

SIMPLY ACCURATE



# HRB SERIES

---

**SIMPLY ACCURATE**

---

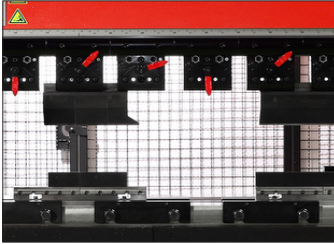
## **THE HRB SERIES PROVIDES THE IDEAL SOLUTION FOR FLEXIBLE AND ACCURATE PRODUCTION**

The AMADA HRB series is the latest evolution in hydraulic drive press brakes. The machine combines a new frame design and the solid characteristics of the HFE3i series, to further improve the productivity; it also features the latest innovative multi-touch screen interface AMNC 3i with Lite mode. The processing precision enables the production of very high quality batches thanks to the new optional auto crowning device, at low energy costs and with unrivalled process stability. The range covers 50 to 220 tonnes and 2 to 4 metres.



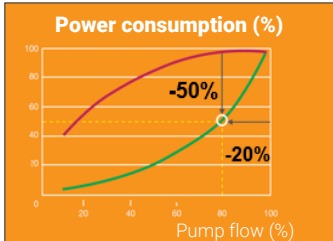
Photograph includes optional equipment

## KEY FEATURES



### Flexibility

The new design of the machine increases the opening distance up to 520mm, with a stroke of 250mm, providing higher flexibility for parts with higher flanges.



### Hydraulic drive / Auto-crowning

Thanks to the management of the hydraulic system with a frequency converter, power consumption is reduced by at least 20% (compared to conventional press brakes without inverter), providing environmental benefits.

The new auto-crowning produces bending tolerance of +/- 20' at any point along the beam.



### Backgauge system

The back gauge of the HRB series has been designed to be precise, fast and reliable, offering excellent performance and gauging flexibility. The standard configuration has two traditional X axes, plus the optional X Delta X, independent Z axis and R axis functions. The back gauge of the low tonnage HRB is also equipped with AMADA's patented FAST system to guarantee the best performance in every situation.



### AMNC 3i

18.5 inch, smartphone type multitouch panel for easy viewing and quick data input.

The new LITE user interface simplify all operations, making the usage of the machine fast and easy.

## OPTIONAL EQUIPMENT AND FUNCTIONS



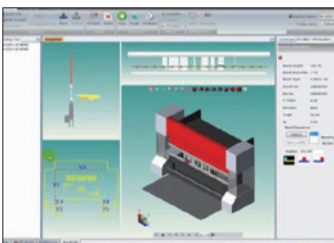
### Angle control and Measuring systems

- Bi-S measures the bending angle and makes corrections as required.
- The AMADA Digipro is a highly-accurate, electronic angle measuring device that transmits the measured angle wirelessly to AMNC 3i.



### Ergonomic features

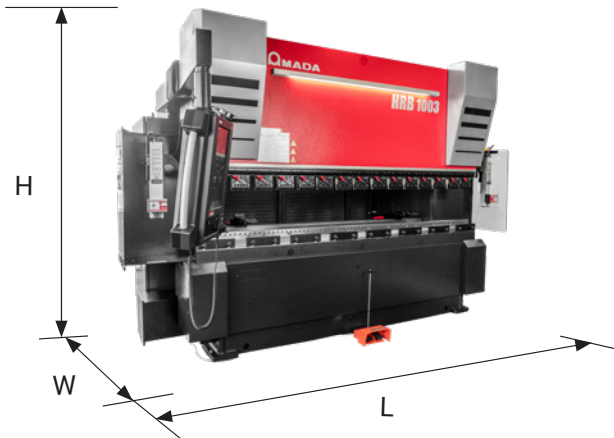
Bending process productivity is related to machine performance and also to ergonomic features that help the operator carry out work quickly and simply. The HRB features the option of "Auto Foot Pedal", the smart sliding pedal that can automatically move opposite the bending station, saving considerable operator time and effort.



### VPSS 3i

Easy and short time creation of optimized unfold drawing and program considering whole process (blanking, bending, welding).

## DIMENSIONS



HRB		5020	1003	1003L	1303	1303L	1703	1703L	2204	2204L
Total length (L)*	mm	3875	4880	4880	4895	4895	4940	4940	6050	6050
Total width (W)**	mm	3075	3100	3100	3200	3200	3200	3200	3100	3100
Total height (H)	mm	2785	2700	2980	2940	3145	3200	3390	3415	3615
Machine mass	kg	5200	7200	7500	9285	9554	11875	12200	16150	16703

\*Total length is intended with the arm and the NC maximum extended on the exterior, and all doors closed.

\*\*Total width is intended with the arm and the NC maximum extended in front, and all doors closed.

## MACHINE SPECIFICATIONS

HRB		5020	1003	1003L	1303	1303L	1703	1703L	2204	2204L
Capacity	kN	500	1000		1300		1700		2200	
Beam length	mm	2150	3110		3100		3110		4280	
Table width	mm	60	60		90		90		90	
Distance between frame	mm	1700	2700		2700		2700		3760	
Throat depth	mm	455	455		465		465		465	
Open height	mm	520	520	620	520	620	520	620	520	620
Stroke length	mm	250	250	350	250	350	250	350	250	350
Working height	mm	993								
Oil capacity	l	55	110		100		160		160	
Power consumption	kW	16.6	18.6		22.1		26.1		31.1	
Approach speed	mm/s	200	200		100		100		100	
Bending speed	mm/s	15	15		10		10		10	
Return speed	mm/s	150	150		100		100		100	

Specifications, appearance and equipment are subject to change without notice by reason of improvement.



For Your Safe Use

Be sure to read the operator's manual carefully before use.

When using this product, appropriate personal protection equipment must be used.

The official model name of machine described in this catalogue is HRB. Use the registered model name when you contact the authorities for applying for installation, exporting, or financing.

Hazard prevention measures are removed in the photos used in this catalogue.

### AMADA UK LTD.

Spennells Valley Road,  
Kidderminster,  
Worcestershire DY10 1XS  
United Kingdom  
Tel: +44 (0)1562 749500  
Fax: +44 (0)1562 749510  
www.amada.co.uk

### AMADA SA

Paris Nord II  
96, avenue de la Pyramide  
93290 Tremblay en France  
France  
Tél: +33 (0)149903000  
Fax: +33 (0)149903199  
www.amada.fr

### AMADA GmbH

Amada Allee 1  
42781 Haan  
Germany  
Tel: +49 (0)2104 2126-0  
Fax: +49 (0)2104 2126-999  
www.amada.de

### AMADA ITALIA S.r.l.

Via Amada I., 1/3  
29010 Pontenure  
(Piacenza)  
Italia  
Tel: +39 0523 872111  
Fax: +39 0523 872101  
www.amada.it

